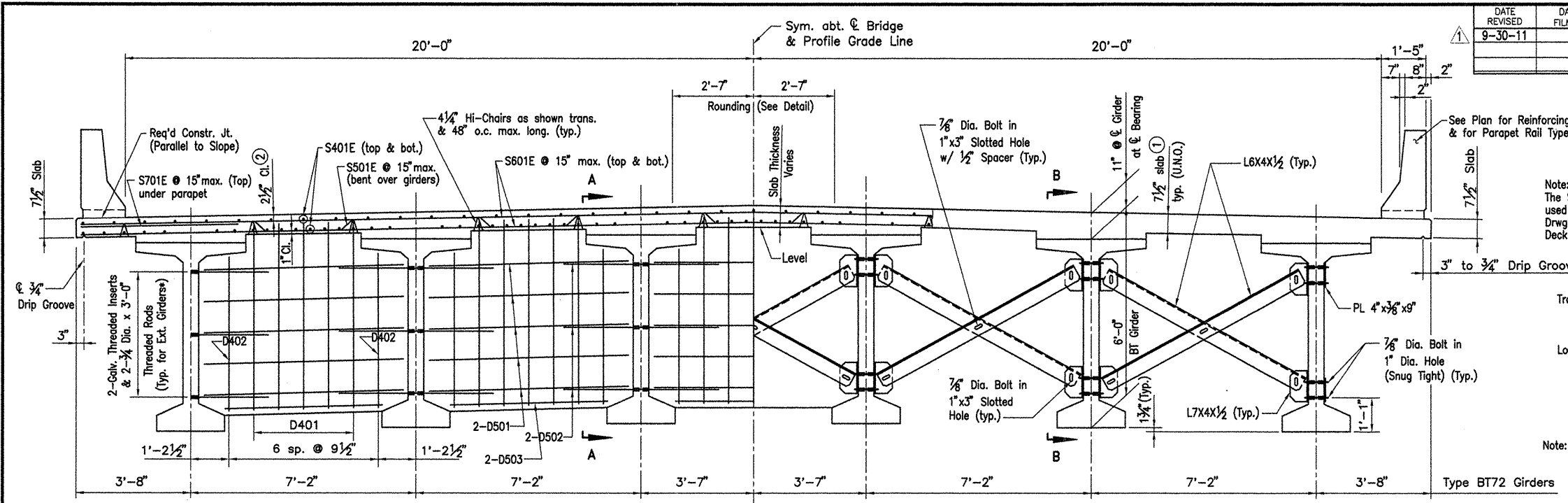


DATE REVISED	DATE FILMED	DATE REVISED	DATE FILMED	FED. ROAD NO.	STATE	FED. AID PROJ. NO.	SHEET NO.	TOTAL SHEETS
9-30-11					ARK.			
				JOB NO.	110395	85	203	
				06830	363' UNIT	47079		



Note:  
The Superstructure details shown are for use when removable deck forming is used and are the basis for measurement of Class S(AE) Concrete. See Standard Drwg. No. 14991 for allowable modifications and for tolerances when Permanent Deck Forming is used.

**SLAB REINFORCING**  
Transverse: S501E @ 15" o.c. max. bent up over girders  
S601E @ 15" o.c. max. in top and bottom  
S701E @ 15" o.c. max. in top at parapet  
Longitudinal: S401E in top and bottom (Placed as shown)

**PARAPET REINFORCING**  
For placing of parapet reinforcing see dwg. 47082.

Note: Class I Protective Surface Treatment shall be applied to the Roadway Surface and to the Face and Top of the Concrete Parapet Rail.

### CAST-IN-PLACE CONCRETE DIAPHRAGMS

### ALTERNATE STRUCTURAL STEEL DIAPHRAGMS

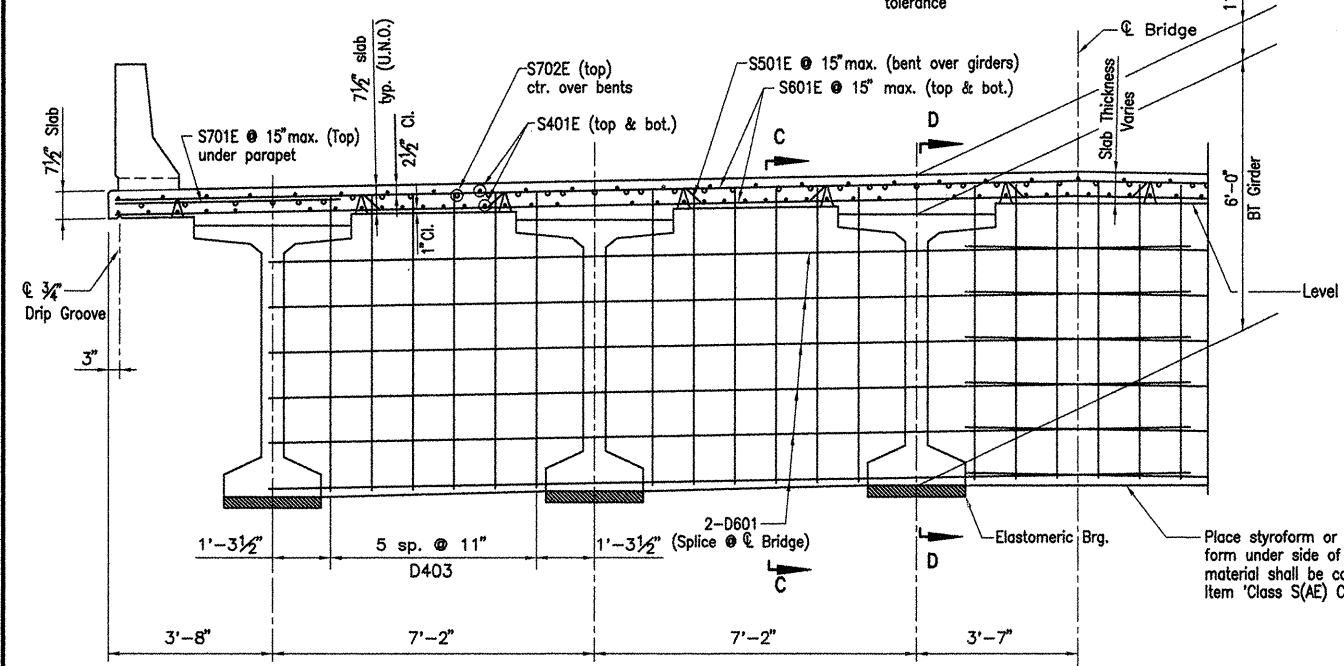
\* Galvanized Threaded Inserts & 3/4" Dia. Threaded Rods to be AASHTO M270, Gr. 36. (Non-Pay Item subsidiary to the item 'Prestressed Concrete Girders'. Galvanizing shall be in accordance with AASHTO M232

### TYPICAL PART-SECTION AT INTERMEDIATE DIAPHRAGMS

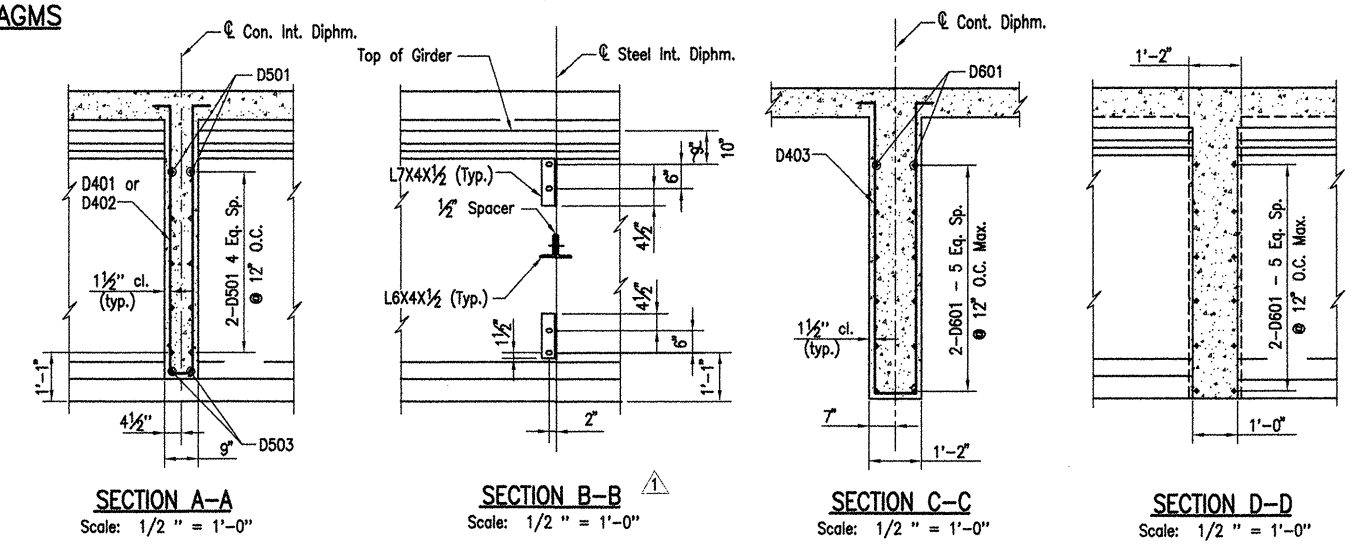
Scale: 1/2" = 1'-0"

- ① Tolerance: Minus: 1/4"  
Plus: 1/2"
- ② Tolerance: Minus: 1/4"  
Plus: 1/2"  
Equal to amount of slab thickening used to meet slab thickness tolerance

Note: All components of the Alternate Structural Steel Diaphragms shall be galvanized, shall be AASHTO M270 Gr.36 and shall be paid for as Class S(AE) Concrete.



### TYPICAL PART SECTION AT CONTINUOUS DIAPHRAGM BETWEEN ENDS OF GIRDERS AT FIXED JOINT

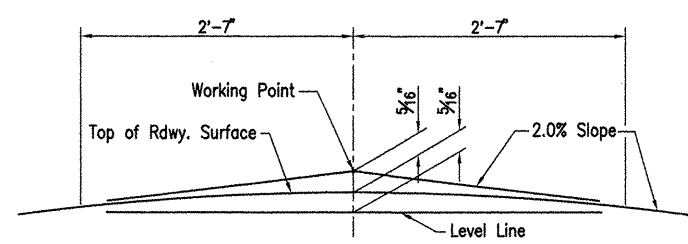


SECTION A-A  
Scale: 1/2" = 1'-0"

SECTION B-B  
Scale: 1/2" = 1'-0"

SECTION C-C  
Scale: 1/2" = 1'-0"

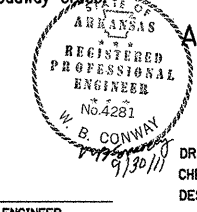
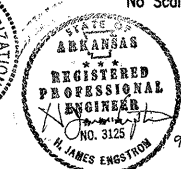
SECTION D-D  
Scale: 1/2" = 1'-0"



NOTE: Working Point matches Theoretical Roadway Grade

### ROUNDING DETAIL

No Scale



### ALTERNATE NO. 1 DETAILS OF 363'-0" CONT. PRESTRESSED CONCRETE GIRDER UNIT (SHEET 2 OF 7)

WHITE RIVER STR. & APPRS.  
(CLARENDON) (PH III) (F)  
MONROE COUNTY

ROUTE 79 SEC. 13

ARKANSAS STATE HIGHWAY COMMISSION  
LITTLE ROCK, ARK.

Engstrom/Modjeski and Masters, Inc.

DRAWN BY: YO DATE: Nov. 07  
CHECKED BY: GPT DATE: Nov. 01  
DESIGNED BY: YO/GPT DATE: Nov. 01  
BRIDGE NO. 06830 DRAWING NO. 47079

Revised Section B-B by HJE/MM  
GPT 9-30-11

COMPANY 1999 JOBS\99-044 AHTD\WHITERIVER\JOB 110395\363 crosssection1 ACAD SCALE: 1/2"=1'-0"